

Hampshire Water Transfer and Water Recycling Project Environmental Statement – Figure 19.12 Groundwater flooding susceptibility

VOLUME NUMBER: 6

PLANNING INSPECTORATE SCHEME NUMBER: WA010002

APPLICATION DOCUMENT REFERENCE: 6.3

APFP REGULATION: 5(2)(a)

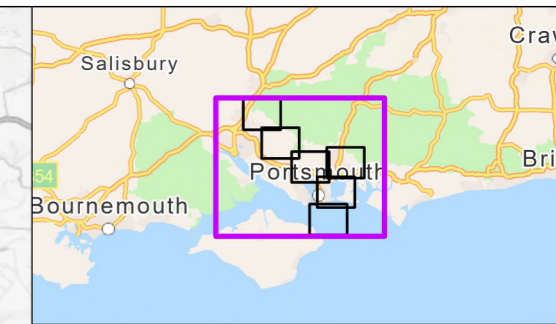
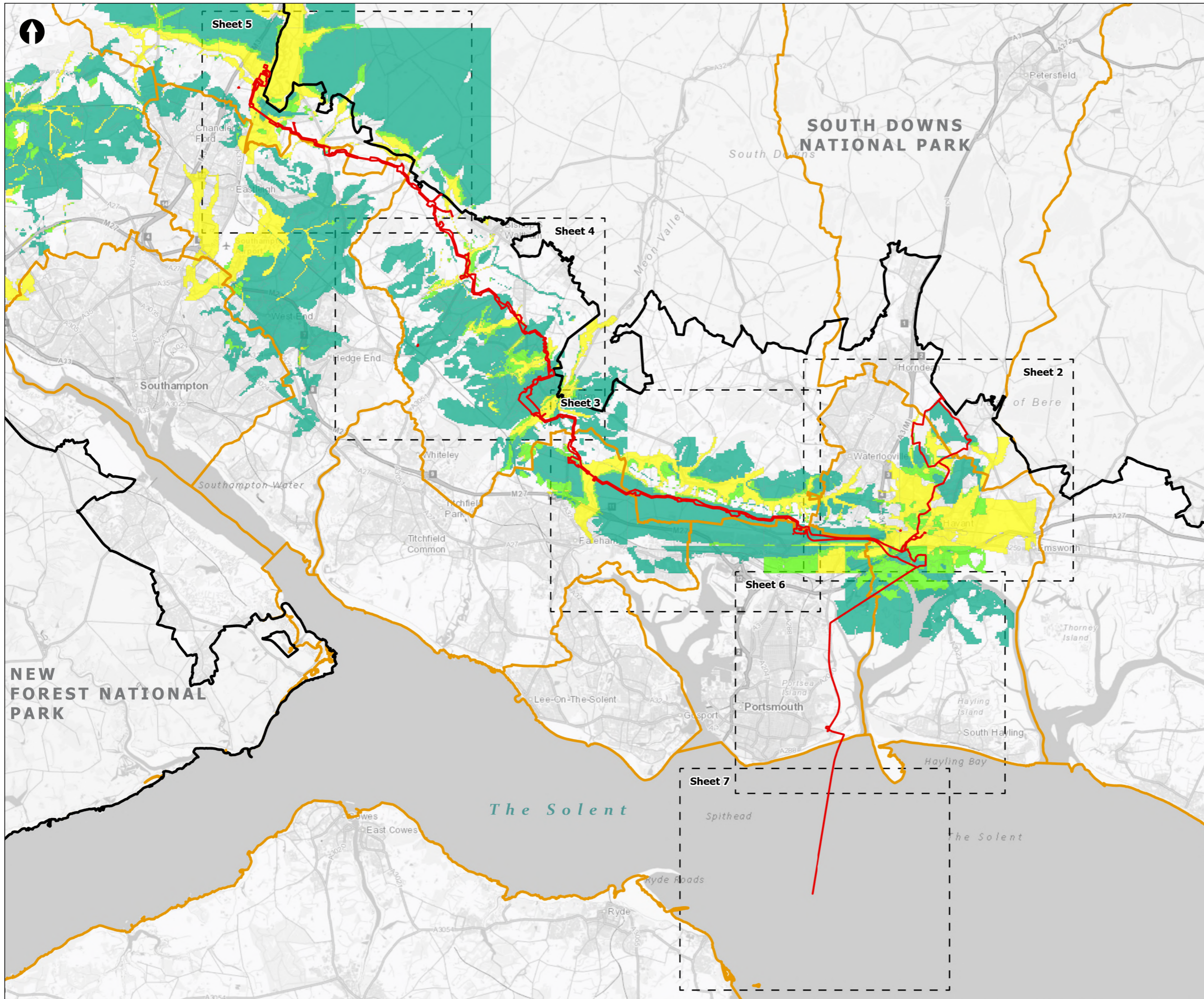
May 2026

Version 0



from
**Southern
Water** 

The Southern Water logo graphic consists of three stylized, wavy blue lines of varying lengths, positioned to the right of the text 'Southern Water'.



Order Limits
 Sheet Extent Boxes 1:30K
 National Parks
 Local planning authorities

Groundwater Flooding

- Limited potential for groundwater flooding to occur
- Potential for groundwater flooding of property situated below ground level
- Potential for groundwater flooding to occur at surface

Coordinate system: British National Grid; Datum: OSGB 1936
 Data sources: © Crown copyright and database rights 2026 Ordnance Survey 0100031673. Contains OS data © Crown Copyright and database right 2020. Sources: Esri, TomTom, Garmin, FAO, NOAA, USGS, © OpenStreetMap contributors, and the GIS User Community

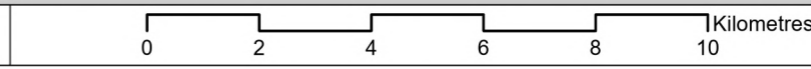
PROJECT TITLE
 Hampshire Water Transfer and Water Recycling Project



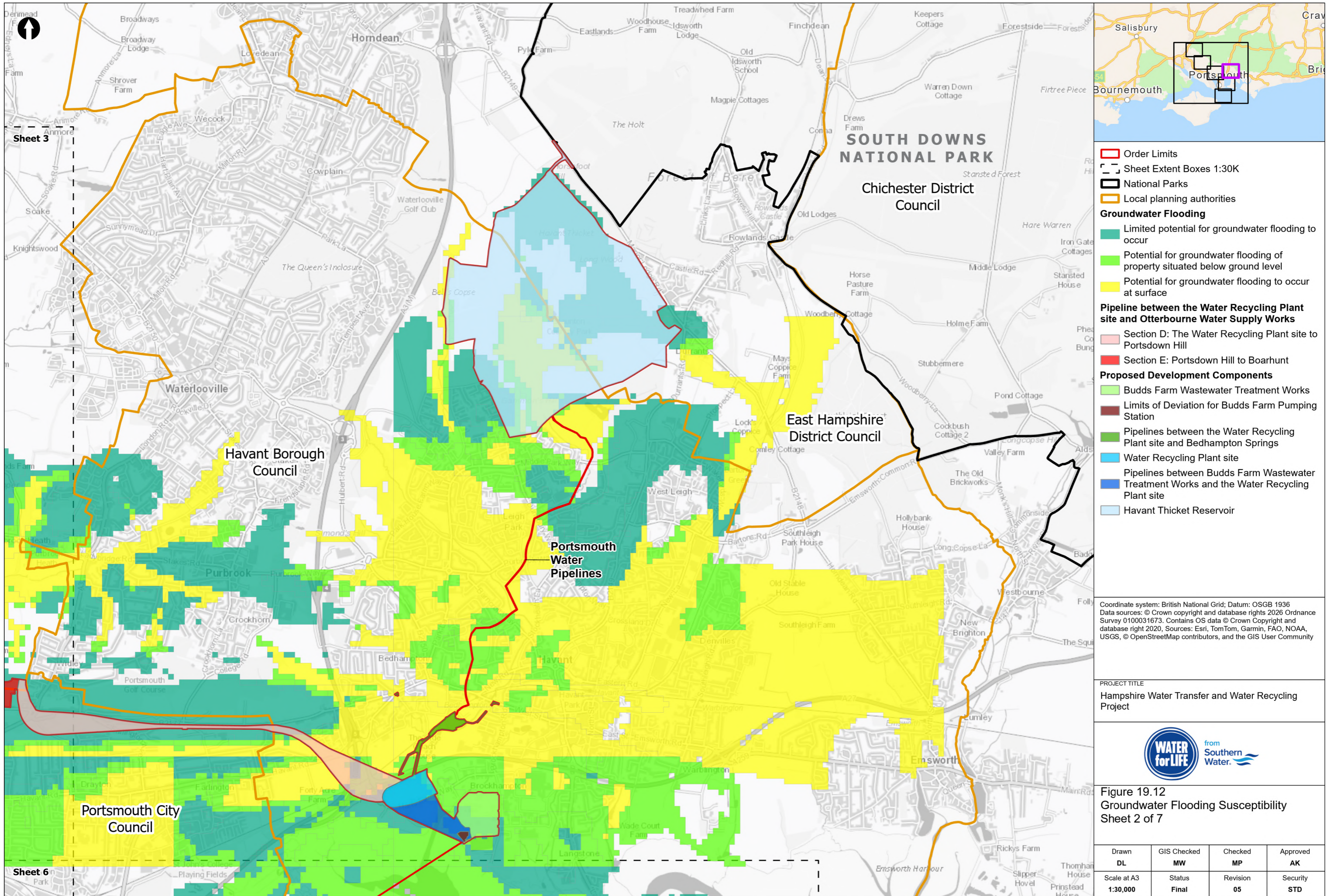
Figure 19.12
 Groundwater Flooding Susceptibility
 Sheet 1 of 7

| | | | |
|---------------------------------|--------------------------|-----------------------|------------------------|
| Drawn DL | GIS Checked MW | Checked MP | Approved AK |
| Scale at A3 1:135,000 | Status Final | Revision 05 | Security STD |

© Southern Water 2026
 This document is issued for the party which commissioned it and for specific purposes connected with the captioned project only. It should not be relied upon by any other party or used for any other purpose. We accept no responsibility for the consequences of this document being relied upon by any other party, or being used for any other purpose, or containing any error or omission which is due to an error or omission in data supplied to us by other parties.



Drawing Number
PC5223-RHD-ES-ZZ-D-Z-0090



- Order Limits
- Sheet Extent Boxes 1:30K
- National Parks
- Local planning authorities
- Groundwater Flooding**
- Limited potential for groundwater flooding to occur
- Potential for groundwater flooding of property situated below ground level
- Potential for groundwater flooding to occur at surface
- Pipeline between the Water Recycling Plant site and Otterbourne Water Supply Works**
- Section D: The Water Recycling Plant site to Portsdown Hill
- Section E: Portsdown Hill to Boarhunt
- Proposed Development Components**
- Budds Farm Wastewater Treatment Works
- Limits of Deviation for Budds Farm Pumping Station
- Pipelines between the Water Recycling Plant site and Bedhampton Springs
- Water Recycling Plant site
- Pipelines between Budds Farm Wastewater Treatment Works and the Water Recycling Plant site
- Havant Thicket Reservoir

Coordinate system: British National Grid; Datum: OSGB 1936
 Data sources: © Crown copyright and database rights 2026 Ordnance Survey 0100031673. Contains OS data © Crown Copyright and database right 2020, Sources: Esri, TomTom, Garmin, FAO, NOAA, USGS, © OpenStreetMap contributors, and the GIS User Community

PROJECT TITLE
 Hampshire Water Transfer and Water Recycling Project

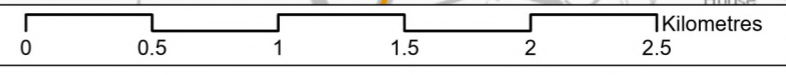


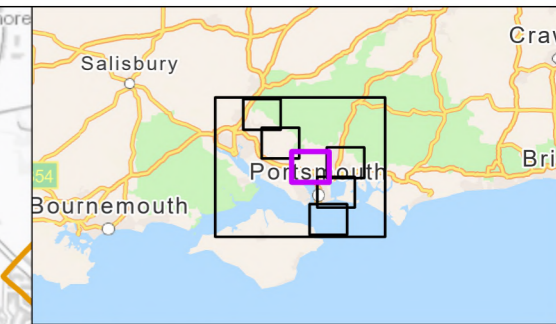
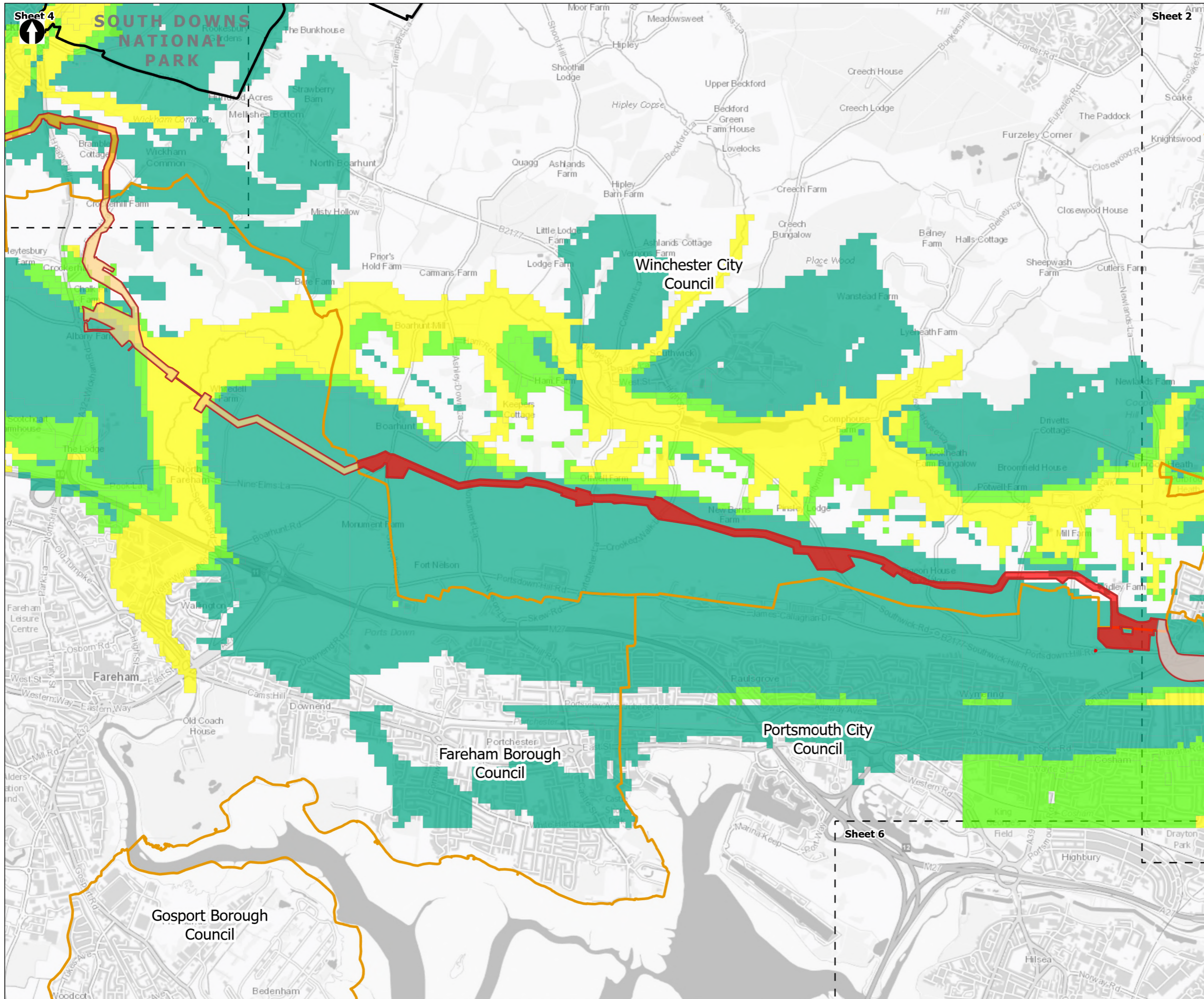
Figure 19.12
 Groundwater Flooding Susceptibility
 Sheet 2 of 7

| | | | |
|-------------------------|-------------------|----------------|-----------------|
| Drawn DL | GIS Checked MW | Checked MP | Approved AK |
| Scale at A3 1:30,000 | Status Final | Revision 05 | Security STD |

Drawing Number
 PC5223-RHD-ES-ZZ-D-Z-0090

© Southern Water 2026
 This document is issued for the party which commissioned it and for specific purposes connected with the captioned project only. It should not be relied upon by any other party or used for any other purpose. We accept no responsibility for the consequences of this document being relied upon by any other party, or being used for any other purpose, or containing any error or omission which is due to an error or omission in data supplied to us by other parties.





Order Limits
 Sheet Extent Boxes 1:30K
 National Parks
 Local planning authorities

Groundwater Flooding

- Limited potential for groundwater flooding to occur
- Potential for groundwater flooding of property situated below ground level
- Potential for groundwater flooding to occur at surface

Pipeline between the Water Recycling Plant site and Otterbourne Water Supply Works

- Section D: The Water Recycling Plant site to Portsdown Hill
- Section E: Portsdown Hill to Boarhunt
- Section F: Boarhunt to Crockerhill
- Section G: Crockerhill to Wickham

Coordinate system: British National Grid; Datum: OSGB 1936
 Data sources: © Crown copyright and database rights 2026 Ordnance Survey 0100031673. Contains OS data © Crown Copyright and database right 2020. Sources: Esri, TomTom, Garmin, FAO, NOAA, USGS, © OpenStreetMap contributors, and the GIS User Community

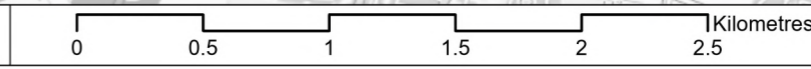
PROJECT TITLE
 Hampshire Water Transfer and Water Recycling Project

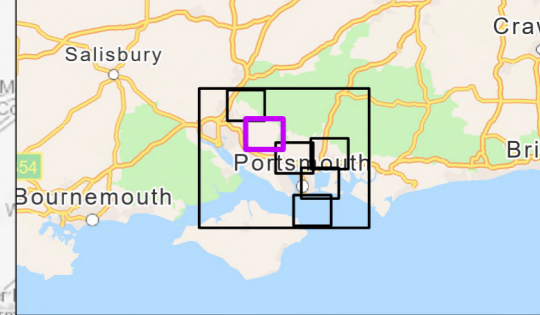
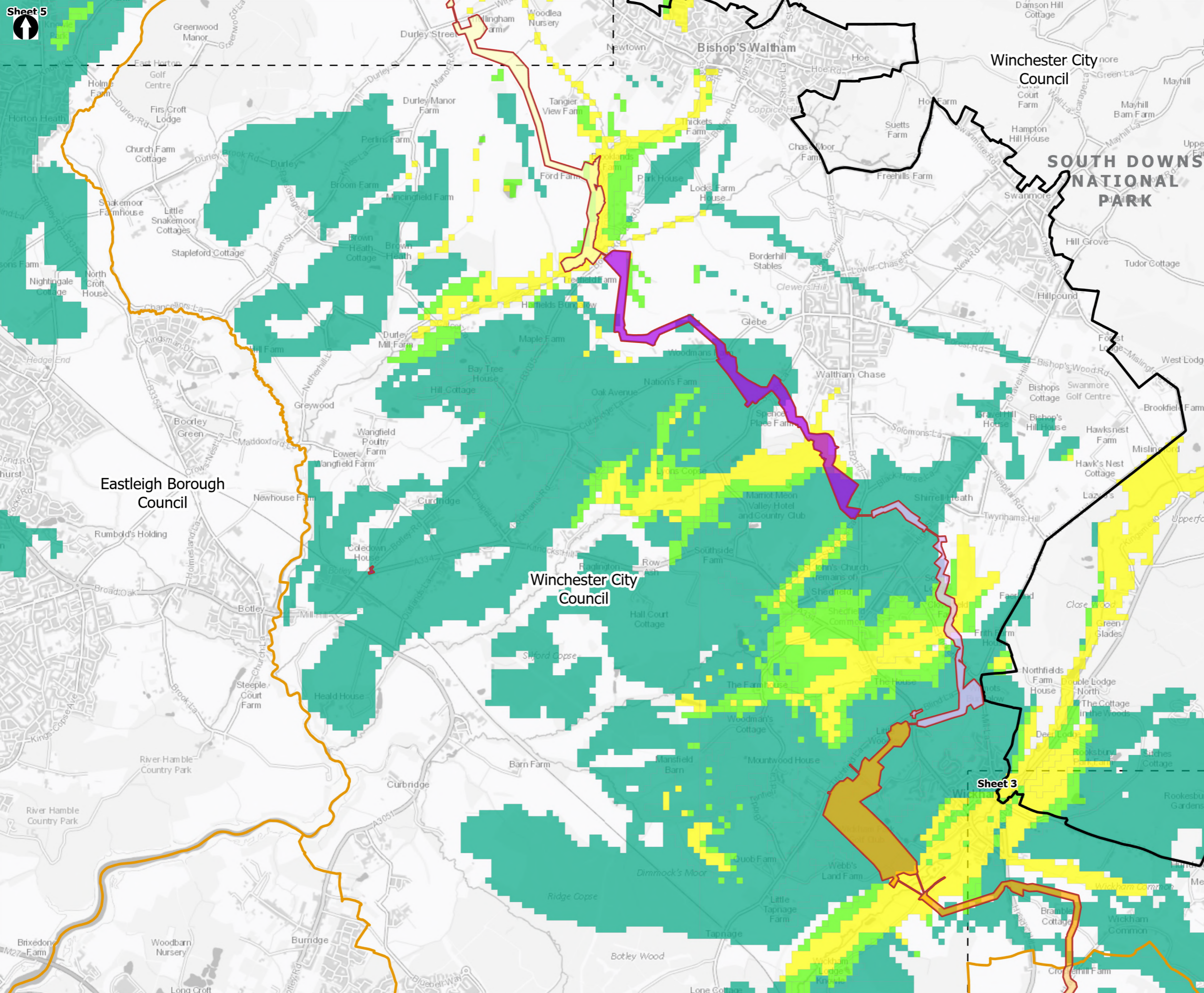


Figure 19.12
 Groundwater Flooding Susceptibility
 Sheet 3 of 7

| | | | |
|--------------------------------|--------------------------|-----------------------|------------------------|
| Drawn DL | GIS Checked MW | Checked MP | Approved AK |
| Scale at A3 1:30,000 | Status Final | Revision 05 | Security STD |

Drawing Number
PC5223-RHD-ES-ZZ-D-Z-0090





Order Limits
 Sheet Extent Boxes 1:30K
 National Parks
 Local planning authorities

Groundwater Flooding

- Limited potential for groundwater flooding to occur
- Potential for groundwater flooding of property situated below ground level
- Potential for groundwater flooding to occur at surface

Pipeline between the Water Recycling Plant site and Otterbourne Water Supply Works

- Section F: Boarhunt to Crockerhill
- Section G: Crockerhill to Wickham
- Section H: Wickham to Shedfield
- Section J: Shedfield to the River Hamble
- Section K: The River Hamble to Lower Upham

Coordinate system: British National Grid; Datum: OSGB 1936
 Data sources: © Crown copyright and database rights 2026 Ordnance Survey 0100031673. Contains OS data © Crown Copyright and database right 2020, Sources: Esri, TomTom, Garmin, FAO, NOAA, USGS, © OpenStreetMap contributors, and the GIS User Community

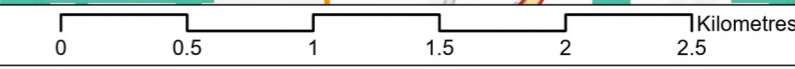
PROJECT TITLE
 Hampshire Water Transfer and Water Recycling Project

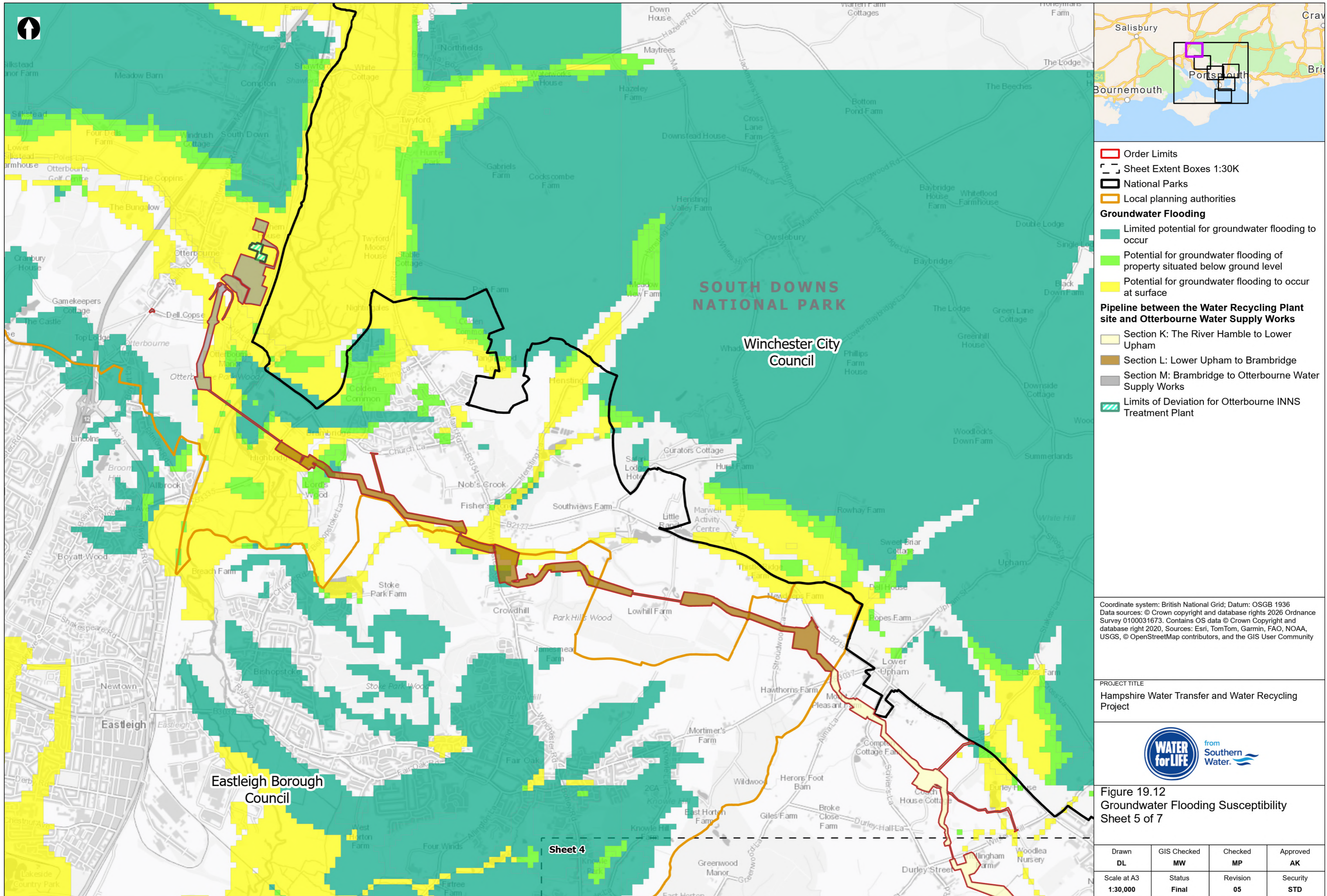


Figure 19.12
 Groundwater Flooding Susceptibility
 Sheet 4 of 7

| | | | |
|-------------------------|-------------------|----------------|-----------------|
| Drawn DL | GIS Checked MW | Checked MP | Approved AK |
| Scale at A3 1:30,000 | Status Final | Revision 05 | Security STD |

Drawing Number
 PC5223-RHD-ES-ZZ-D-Z-0090





- Order Limits
- Sheet Extent Boxes 1:30K
- National Parks
- Local planning authorities
- Groundwater Flooding**
 - Limited potential for groundwater flooding to occur
 - Potential for groundwater flooding of property situated below ground level
 - Potential for groundwater flooding to occur at surface
- Pipeline between the Water Recycling Plant site and Otterbourne Water Supply Works**
 - Section K: The River Hamble to Lower Upham
 - Section L: Lower Upham to Brambridge
 - Section M: Brambridge to Otterbourne Water Supply Works
 - Limits of Deviation for Otterbourne INNS Treatment Plant

Coordinate system: British National Grid; Datum: OSGB 1936
 Data sources: © Crown copyright and database rights 2026 Ordnance Survey 0100031673. Contains OS data © Crown Copyright and database right 2020. Sources: Esri, TomTom, Garmin, FAO, NOAA, USGS, © OpenStreetMap contributors, and the GIS User Community

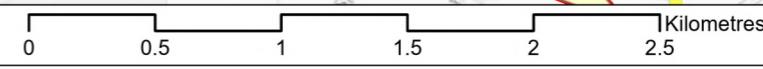
PROJECT TITLE
 Hampshire Water Transfer and Water Recycling Project



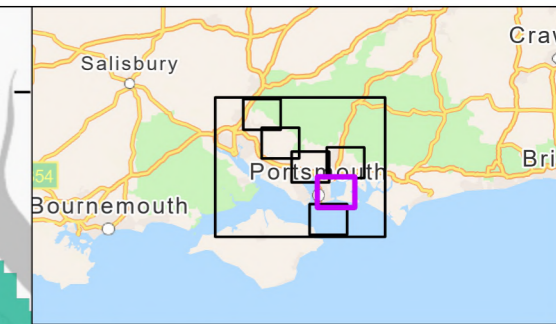
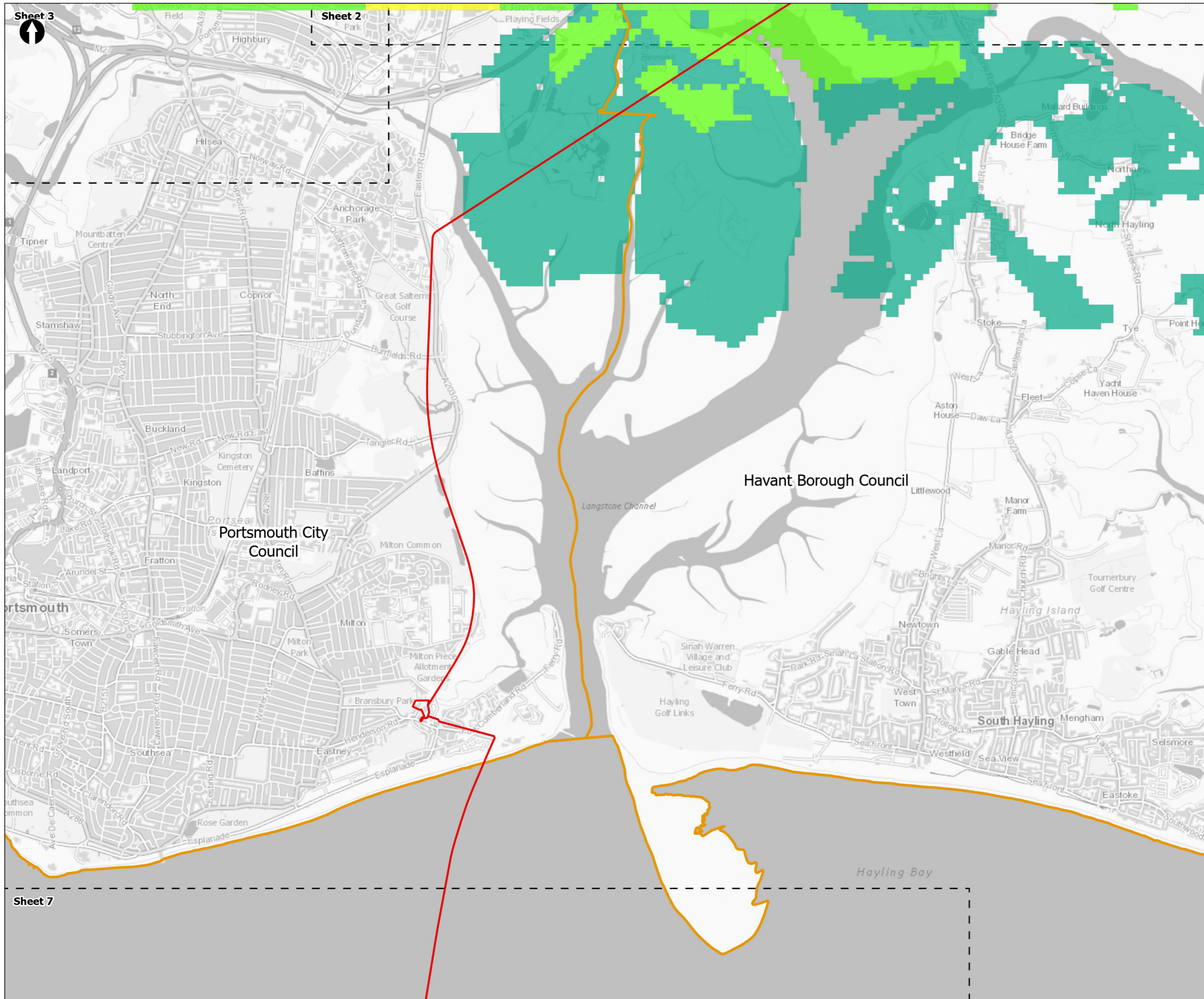
Figure 19.12
 Groundwater Flooding Susceptibility
 Sheet 5 of 7

| | | | |
|--------------------------------|--------------------------|-----------------------|------------------------|
| Drawn DL | GIS Checked MW | Checked MP | Approved AK |
| Scale at A3 1:30,000 | Status Final | Revision 05 | Security STD |

© Southern Water 2026
 This document is issued for the party which commissioned it and for specific purposes connected with the captioned project only. It should not be relied upon by any other party or used for any other purpose.
 We accept no responsibility for the consequences of this document being relied upon by any other party, or being used for any other purpose, or containing any error or omission which is due to an error or omission in data supplied to us by other parties.



Drawing Number
PC5223-RHD-ES-ZZ-D-Z-0090



Order Limits
 Sheet Extent Boxes 1:30K
 Local planning authorities

Groundwater Flooding

- Limited potential for groundwater flooding to occur
- Potential for groundwater flooding of property situated below ground level
- Potential for groundwater flooding to occur at surface

Coordinate system: British National Grid; Datum: OSGB 1936
 Data sources: © Crown copyright and database rights 2026 Ordnance Survey 0100031673. Contains OS data © Crown Copyright and database right 2020. Sources: Esri, TomTom, Garmin, FAO, NOAA, USGS, © OpenStreetMap contributors, and the GIS User Community

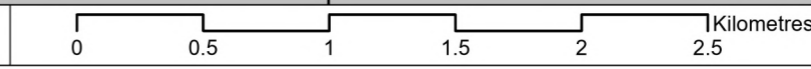
PROJECT TITLE
 Hampshire Water Transfer and Water Recycling Project



Figure 19.12
 Groundwater Flooding Susceptibility
 Sheet 6 of 7

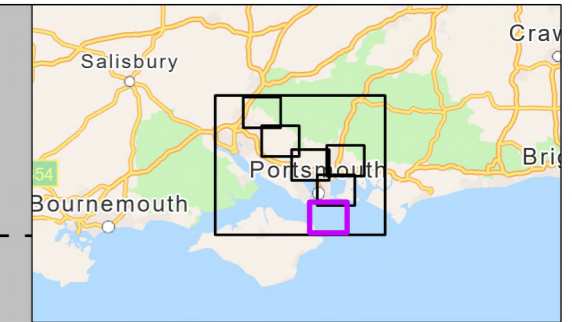
| | | | |
|--------------------------------|--------------------------|-----------------------|------------------------|
| Drawn DL | GIS Checked MW | Checked MP | Approved AK |
| Scale at A3 1:30,000 | Status Final | Revision 05 | Security STD |


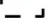

Drawing Number
PC5223-RHD-ES-ZZ-D-Z-0090





Sheet 6



 Order Limits
 Sheet Extent Boxes 1:30K
 Local planning authorities

Spithead



Isle of Wight Council

Coordinate system: British National Grid; Datum: OSGB 1936
Data sources: © Crown copyright and database rights 2026 Ordnance Survey 0100031673. Contains OS data © Crown Copyright and database right 2020, Sources: Esri, TomTom, Garmin, FAO, NOAA, USGS, © OpenStreetMap contributors, and the GIS User Community

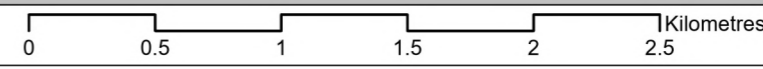
PROJECT TITLE
Hampshire Water Transfer and Water Recycling Project



Figure 19.12
Groundwater Flooding Susceptibility
Sheet 7 of 7

| | | | |
|--------------------------------|--------------------------|-----------------------|------------------------|
| Drawn DL | GIS Checked MW | Checked MP | Approved AK |
| Scale at A3 1:30,000 | Status Final | Revision 05 | Security STD |

© Southern Water 2026
This document is issued for the party which commissioned it and for specific purposes connected with the captioned project only. It should not be relied upon by any other party or used for any other purpose.
We accept no responsibility for the consequences of this document being relied upon by any other party, or being used for any other purpose, or containing any error or omission which is due to an error or omission in data supplied to us by other parties.



Drawing Number
PC5223-RHD-ES-ZZ-D-Z-0090